



Indító műhelymunka - Baranya JTF Pécsi Egyetem KTK, Pécs

Trinomics, REKK, Energiaklub

Február 21, 2023

www.trinomics.eu

- I. Introduction
 - I. Team overview
- II. Project introduction
 - I. EC
 - II. Tillväxtverket
 - III. Norrbotten & Västerbotten
- III. Project approach: Task-by-task
- IV. Discussion
- V. Project timeline
- VI. Any other business





I. Introduction Team



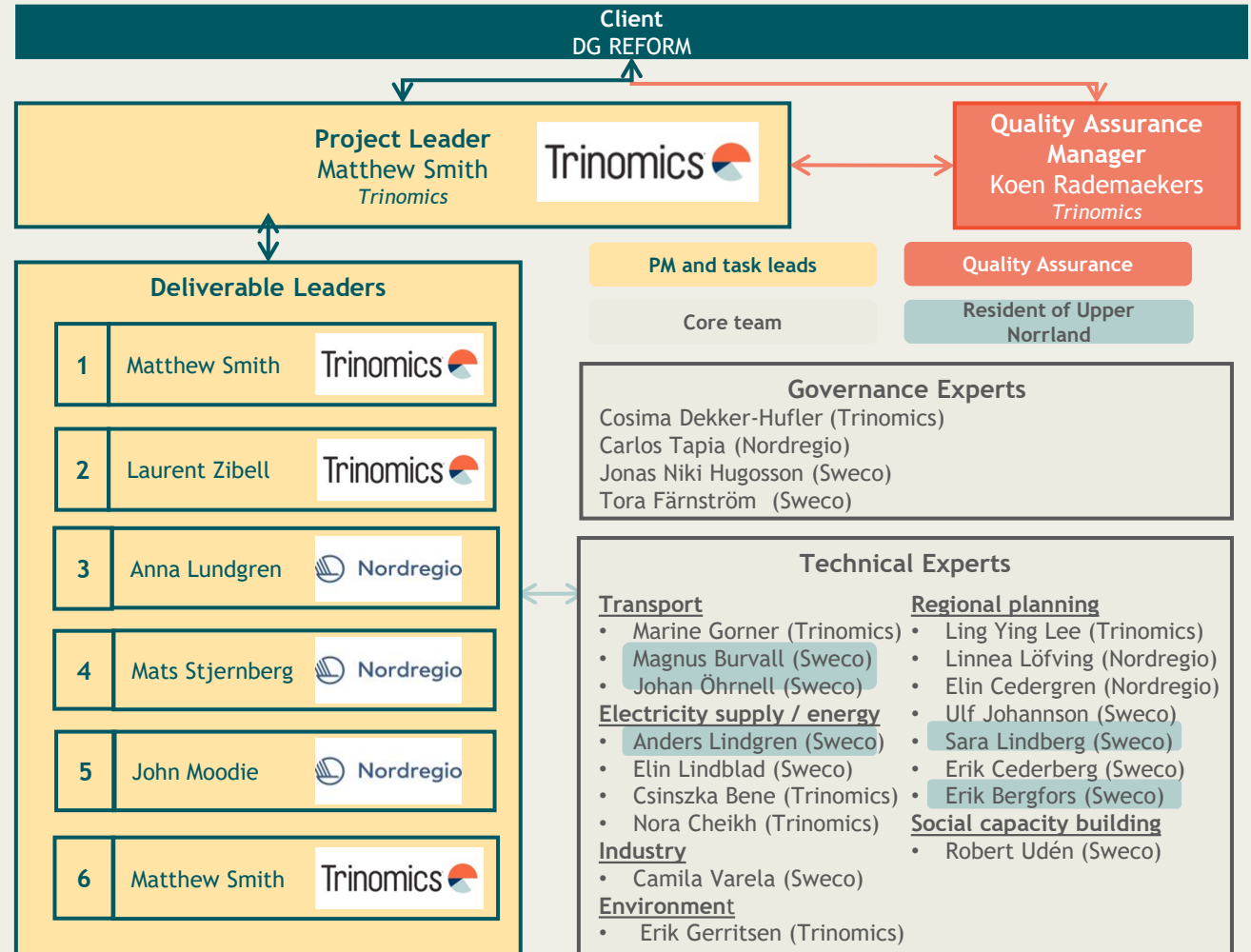
www.trinomics.eu

Project team

Trinomics provides experience in Just Transition and skills in energy systems, electricity networks, manufacturing processes, green skills, water management, nature protected areas & transport.

Nordregio provides in-depth understanding of Swedish governance, institutional structures and planning processes.

Sweco provides technical and local understanding of the industrial and regional landscape in Upper Norrland.



1. Contribute to institutional, administrative and growth-sustaining structural reforms in Sweden
2. To assist national authorities in improving their capacity to design, develop and implement reforms in line with Article 4 of the TSI Regulation.





II. Project introduction - EC



II. Project introduction - Tillväxtverket



II. Project introduction - Norrbotten



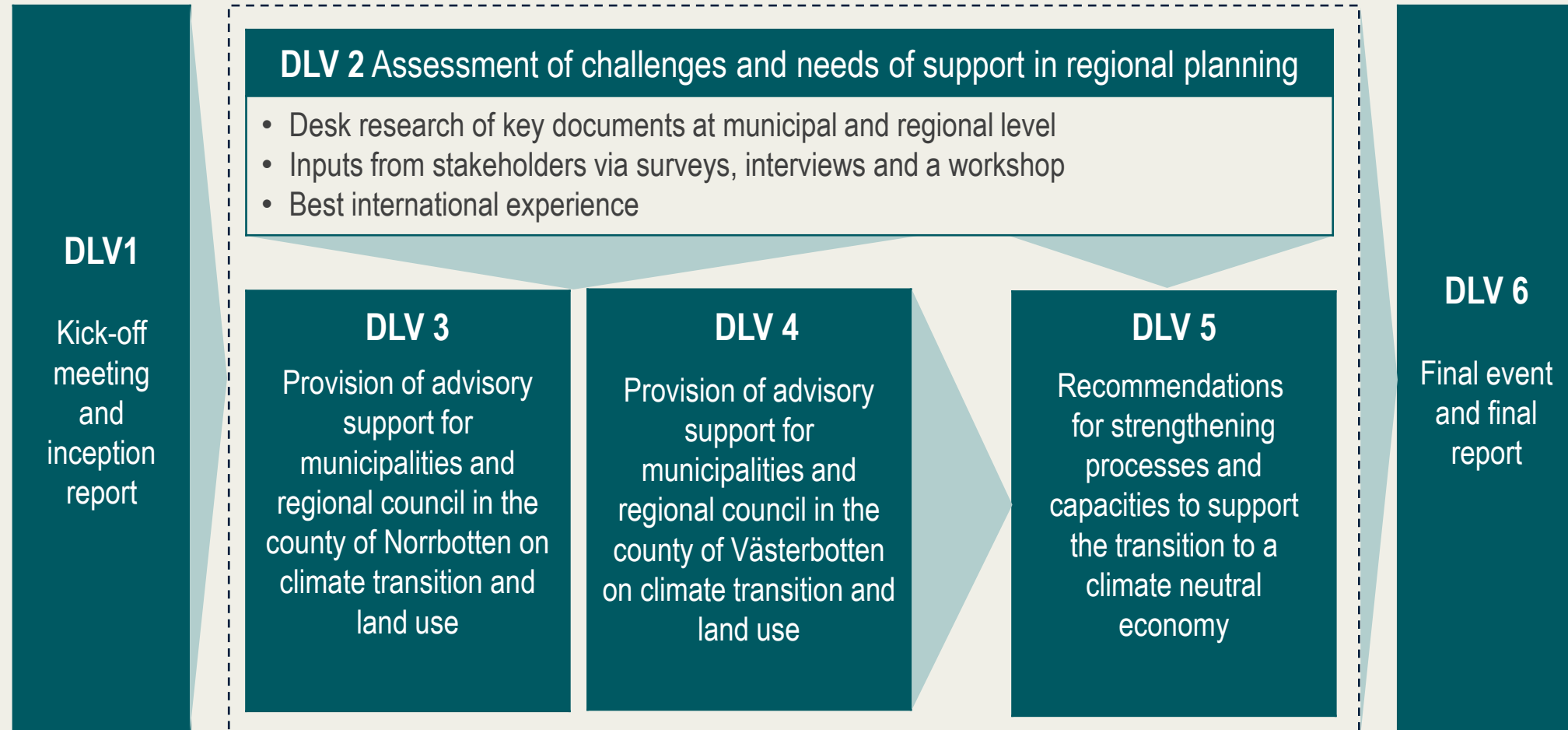
II. Project introduction -Västerbotten



III. Project approach - Task-by-task



www.trinomics.eu



Task 1.1: Kick-off meeting

Task 1.2: Inception report



- Project scope
- Needed data and information
- Clarification on open issues
- Proposed approach and methodology
- Relevant research and studies
- Work organisation
- Quality assurance and project management
- Steering Committee & working arrangements



Task 1.1: Kick-off meeting

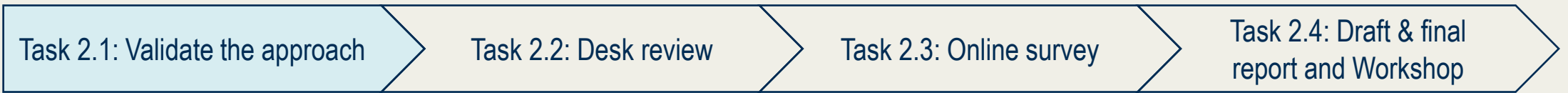
Task 1.2: Inception report



- Project plan with milestones, the timeline, and an updated risk mitigation matrix
- Updated methodology
- Draft list of categories of government authorities and other stakeholders to be consulted
- An overview of the plan to involve local experts
- Progress, result and impact indicators
- Overview of the countries that have already elaborated and implemented such policies



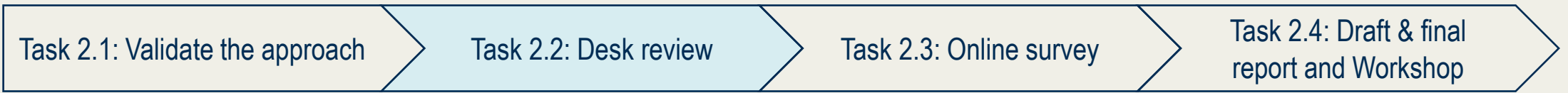
DLV 2 – Assessment of challenges and needs of support in regional planning



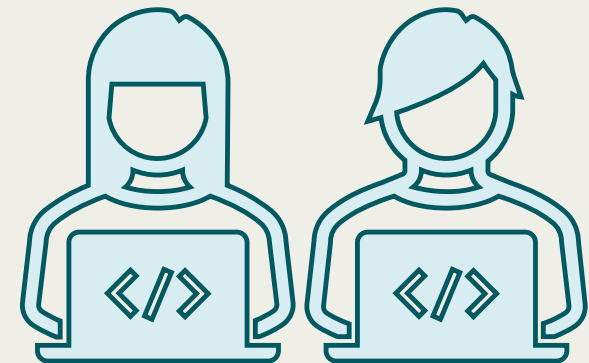
- Meeting with the beneficiaries in Sweden and DG Reform
 - *Representatives from Norrbotten and Västerbotten, others?*
- Topics:
 - Relevant documents to develop interview and survey questions
 - Timeline
 - Proposed report structure (challenges and needs (1) common to the two regions, (2) specific to Norrbotten and (3) specific to Västerbotten)
 - Stakeholder engagement approach



DLV 2 – Assessment of challenges and needs of support in regional planning



- **Starting point:**
 - JTF programme for the steel and non-ferrous metals sector,
 - 2 territorial Just Transition plans
- **Further desk research on local level**
- **Guidance:** national-level plans, development objectives, conflicts, Sámi population, ...
- **Illustrative key documents:**
 - National level & external analysis
 - Regional level
 - Municipality level



DLV 2 – Assessment of challenges and needs of support in regional planning

Task 2.1: Validate the approach

Task 2.2: Desk review

Task 2.3: Online survey

Task 2.4: Draft & final report and Workshop

Interviews, semi-structured (in Swedish)

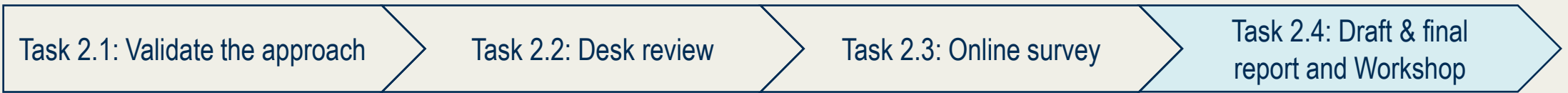
- Focus: description of needs and challenges
- Stakeholders of the administration and public sector
- **Administrative level:** at least 8 interviews at municipal and at least 4 interviews at regional level (for each region)
- **Public sector:** at least 6 interviews (for each region) with the following entities:
 - Boverket, Trafikverket, Sami Parliament, Svenska Kraftnät, Norrbotten Region Administrative Board and Västerbotten Region Administrative Board

Online survey (in Swedish)

- Focus: priorities for spatial planning regarding the Just Transition of the regional steel and non-ferrous metal industries and of the Swedish economy & society
- **Wider public:** industry and services stakeholders, educational and cultural institutions, public transport companies, trade unions, Sámi representatives, civil society and youth
- *Optionally: more broadly to educated young adults in the central and southern parts of Sweden to assess the attractiveness of the Upper Norrland to this population*
- Consultation period: 6 weeks
- Networks of the steering group and the consultant team



DLV 2 – Assessment of challenges and needs of support in regional planning



- **Draft report in Swedish and English**
 - Validation via online platform for municipal and regional authorities
- **1-day workshop**
 - All relevant departments and stakeholder
 - Physical or hybrid
 - English or Swedish (with interpretation)
 - On aspects (1) common to both regions, (2) specific to Norrbotten and (3) specific to Västerbotten
- **To complement the D2 final report**



DLV 3 & 4 – Report on the provision of direct advisory support – Norrbotten & Västerbotten

Task 3/4.1: Engagement with Regional Steering Group

Task 3/4.2: Workshops

Task 3/4.3: Preparation of work streams

Task 3/4.4: Advisory support and reporting

- **Regional Steering Group - to be included:**
 - National, regional and municipal level, national agencies, industry stakeholders and other societal actors
- To provide guidance and feedback to the project team
- Meetings every 2 months
 - In Swedish
 - Preferably physical



DLV 3 & 4 – Report on the provision of direct advisory support – Norrbotten & Västerbotten



- **2 workshops** in consultation with the Regional Steering Group
- **Local and regional** policymakers and practitioners
- To (1) **inform** the preparation of work-streams and provision of advisory support and (2) **discuss** the outcomes of advisory support at municipal level

Key planning instruments	Regional and local economic development plans	Physical planning instruments and provisions (land use and area zoning)	Social policies at regional and local level
Key sectors and policy priorities	Steel mining and processing, energy storage, hydrogen production, CCS technologies, ...	Housing, transport, energy production (wind, hydro, etc.), energy grids, resource conservation, Sámi reindeer herding, ...	Demographic challenge, skill development, social participation, social justice and indigenous rights, ...
Stakeholders to be involved	Region Norrbotten and Region Västerbotten, Tillväxtverket, Sámi Parliament, Boverket (National Board of Housing, Building and Planning), Trafikverket (Regional Public Transport Authority), Svenska Kraftnät (Transmission System Operator) and County Administrative Boards		
Municipalities	Norrbotten: Arjeplog, Arvidsjaur, Boden, Gällivare, Haparanda, Jokkmokk, Kalix, Kiruna, Luleå, Pajala Piteå, Älvsbyn, Övertorneå Västerbotten: Åsele, Bjurholm, Dorotea, Lycksele, Malå, Nordmaling, Norsjö, Robertsfors, Skellefteå Sorsele, Storuman, Umeå, Vännäs, Vilhelmina, Vindeln		



DLV 3 & 4 – Report on the provision of direct advisory support – Norrbotten & Västerbotten



- Based on DLV 2, the workshops (Task 3.2) and in consultation with the Regional Steering Group
- 4 work-streams to be developed
- Considerations ~~to attract new workforce~~:
 - Transport, energy and housing
 - Coordination between governance levels (municipal / regional) and cross-border between municipalities and regions
 - ~~Potentially:~~ *Rights of the Sámi people*
- Criteria:
 - Relevance, alignment, technical feasibility and resource availability



DLV 3 & 4 – Report on the provision of direct advisory support – Norrbotten & Västerbotten

Task 3/4.1: Engagement with Regional Steering Group

Task 3/4.2: Workshops

Task 3/4.3: Preparation of work streams

Task 3/4.4: Advisory support and reporting

Example Norrbotten

Preliminary identification of work-streams and thematic priorities for Norrbotten municipalities

	WS1: Transport infrastructures	WS2: Energy infrastructures	WS3: Housing provision	WS4: Nature conservation and protection	WS5: Resource management (land)	WS6: Resource management (water)	WS7: Wellbeing and attractiveness	WS8: Sámi rights	WS9: ...
Älvsbyn				X			X		
Arjeplog				X	X	X	X	X	
Arvidsjaur				X				X	
Boden	X	X	X		X	X			
Gällivare	X	X			X	X	X	X	
Haparanda							X	X	
Jokkmokk		X	X	X		X		X	
Kalix							X	X	
Kiruna	X	X	X		X	X		X	
Luleå		X	X	X		X			
Övertorneå				X			X	X	
Pajala			X		X			X	
Piteå			X	X					

- Natural resources
- Biodiversity hotspots
- Energy production infrastructure
- Concentrated energy consumption
- Sámi language
- Reindeer herding
- Population loss/gains



DLV 3 & 4 – Report on the provision of direct advisory support – Norrbotten & Västerbotten

Task 3/4.1: Engagement with Regional Steering Group

Task 3/4.2: Workshops

Task 3/4.3: Preparation of work streams

Task 3/4.4: Advisory support and reporting

Work streams	Anticipated outcomes (for illustrative purposes only)	Senior experts
WS1: Transport infrastructures	Analysis of institutional barriers and opportunities for vertical and horizontal coordination of transport plans; Analysis of cross-regional flows and connectivity challenges; Analysis of accessibility to basic services and simulation of projected change.	Magnus Burvall Johan Öhrnell
WS2: Energy infrastructures	Analysis of present and projected capacity of production sites, transmission lines and storage facilities; Analysis of affections of the new infrastructures on specific economic activities, social groups and subareas.	Anders Lindgren Elin Lindblad
WS3: Housing provision	Analysis of current needs and long-term housing demand, focusing on groups with specific needs (elderly, students, immigrants, etc.); Analysis of housing segregation and integration challenges in urban and suburban areas; Analysis on the effects of the implications of national planning instruments on local spatial plans, focusing on shortages of affordable housing.	Mats Stjernberg Linnea Löfving
WS4: Nature conservation and protection	Analysis of local conservation and biodiversity policies and their relation to other priorities (e.g. climate adaptation, energy production, etc.); Strategic Environmental Impact Assessment of selected local and	Erik Gerritsen Robert Udén



DLV 5 – Recommendations for strengthening processes and capacities

Task 5.1: Draft recommendations

Task 5.2: Workshop

Task 5.2: Final recommendations

Type of recommendation

- Policy
- Roles and responsibilities
- Institutional
- Collaborative governance
- Capacity building
- Territorial
- Cross-sector
- Stakeholder engagement
- Financial



DLV 5 – Recommendations for strengthening processes and capacities

Task 5.1: Draft recommendations

Task 5.2: Workshop

Task 5.2: Final recommendations

- Interactive workshop
- Policymakers and practitioners
- Discussion, development and amendment of recommendations



DLV 5 – Recommendations for strengthening processes and capacities

Task 5.1: Draft recommendations

Task 5.2: Workshop

Task 5.2: Final recommendations

- Finalisation based on the workshop
- Digital policy brief
 - targeted at key policymakers and practitioners



Task 6.1: Final event

Task 6.2: Draft & final report

- Presentation of key findings, recommendations and conclusions
- Targeted audience
- In cooperation with the Steering Committee
- In-person in Sweden
- Takeaways to be included in the final report



Task 6.1: Final event

Task 6.2: Draft & final report

- Key insights
- Summary of activities carried out
- Challenges confronted
- Considerations for future studies
- Assessment of indicators
- Conclusion of the final event

The final report





IV. Discussion



www.trinomics.eu

- The composition and set-up of the **Regional Steering Committees** for Norrbotten and Västerbotten.
- The **adequacy of the spatial resolution** of the maps available to rural municipalities.
- Any initial thoughts on most relevant potential workstreams in D3 and D4?
- The choice made by Sweden (if any) for the **reduction of GHG emissions** caused by the combustion of fossil gas in high-temperature industrial ovens (biomethane / hydrogen / synthetic methane / CCS).





V. Project timeline



www.trinomics.eu

Timetable

Contract signed
30 November 2022 – end 20 November 2024



Year Task / Month	2022 / 23												2023 / 24											
	1	2	3	4	5	6	7	8	9	10	11	12	13	14	15	16	17	18	19	20	21	22	23	24
DLV 1			■																					
DLV 2				■		■																		
DLV 3 & 4																					■			
DLV 5																		■						
DLV 6																						■		
Progress reports			1			2			3			4			5			6			7			8
Steering Committee meetings	1			2			3			4			5			6			7			8		

- Deliverables submission / end of task / meeting
- Task is active



- Inception report based on today's meeting – discussed in preliminary call, short delay due to holidays – propose **Fri 3rd February**
 - Project plan (incl. milestones, timeline, updates risk mitigation matrix)
 - Updated methodology
 - Draft list of categories for consultation
- In-person Inception meeting – in first two weeks February - current favourite date/time: **Thu 9th Feb morning**
 - Location to be confirmed
 - Also used as planned meeting of sub-task D2.1 meeting to validate the chosen approach
- D2 report deadlines & workshop – timing to be discussed





VI. Any other business



www.trinomics.eu

Allocation of resources

Deliverable	PM	Senior Expert	Junior Expert	Total	Share
1	5	34	26	65	6%
2	15	105	99	219	20%
3	18	141	183	342	31%
4	18	141	183	342	31%
5	4	40	52	96	9%
6	4	26	19	49	4%
Total	64	487	562	1113	100%





Thank you for your attention, please contact us for more information



Carlos Tapia

Nordregio
Holmamiralens Väg 10
Skeppsholmen, Stockholm Sweden
SE262000159001-1590
carlos.tapia@nordregio.org

Matthew Smith

(Project Manager)

Trinomics
Westersingel 34
3014GS Rotterdam, the Netherlands
matthew.smith@trinomics.eu



Robert Udén

Sweco International AB
Gjörwellsgatan 22
SE 10026 Stockholm, Sweden
556862-9918
+46 (0) 8695 60 00,
robert.uden@sweco.se